

MR-2010-151
Dan Thornton

RESOLUTION NO. 26690

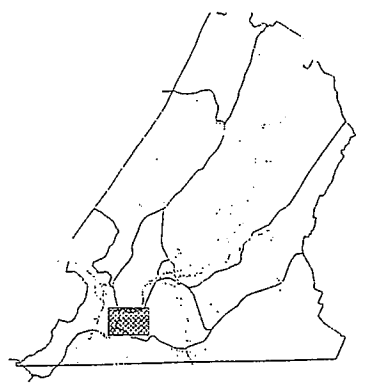
A RESOLUTION AUTHORIZING THE DIRECTOR OF GENERAL SERVICES TO ALLOW HAMILTON COUNTY TEMPORARY ACCESS TO FARMERS MARKET (TAX MAP NO. 145E-T-002) IN ORDER TO PERFORM GEOTECHNICAL AND OTHER RELATED TESTS AND INSPECTIONS, AND TO CONVEY THE SUBDIVIDED PARCEL TO HAMILTON COUNTY TO BUILD ITS NEW HEALTHCARE CLINIC ON THE SITE, DESCRIBED MORE PARTICULARLY BELOW.

BE IT RESOLVED BY THE CITY COUNCIL OF THE CITY OF CHATTANOOGA, TENNESSEE, That there be and is hereby authorizing the Director of General Services to allow Hamilton County temporary access to Farmers Market (Tax Map No. 145E-T-002) in order to perform geotechnical and other related tests and inspections, and to convey the subdivided parcel to Hamilton County to build its new healthcare clinic on the site, described more particularly below:

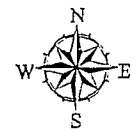
Part of a property located in the 700 block of East 11th Street beginning at its northeast corner thence some 248 feet southwest to a point, thence some 178 feet northwest, thence some 100 feet southwest to the south line of said property, thence some 46 feet northwest, thence some 371 feet northeast to the northwest corner of said property, thence 224 feet southeast along the north line of said property to its northeast corner, the point of beginning, being part of the property described in Deed Book 7889, Page 238, ROHC. Tax Map 145E-T-002 (part).

ADOPTED: April 26, 2011

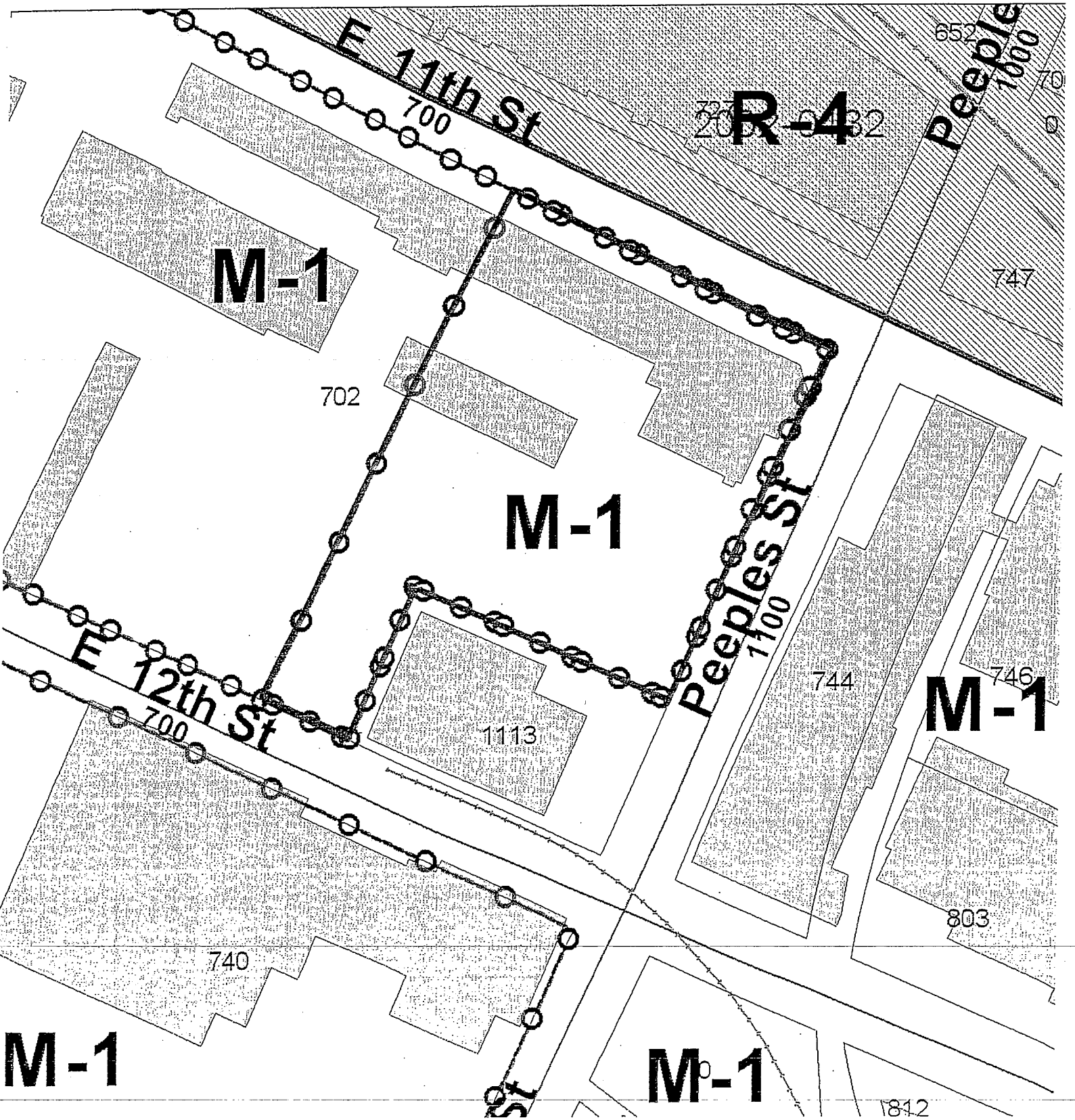
/mms



CHATTANOOGA
CASE NO: 2010-0151
PC MEETING DATE: 11/8/2010
MR: SURPLUS PROPERTY



1 in. = 80.0 feet



11/20/2015 10:40 AM

LEGEND

- 1. 3" DASHED LINE WITH ARCS WITH CENTER POINTS - EXISTING PROPERTY LINES
- 2. 3" DASHED LINE WITH ARCS WITH CENTER POINTS - EXISTING EASEMENTS
- 3. 3" DASHED LINE WITH ARCS WITH CENTER POINTS - EXISTING RIGHTS OF WAY
- 4. 3" DASHED LINE WITH ARCS WITH CENTER POINTS - EXISTING ADJACENT PROPERTY LINES
- 5. 3" DASHED LINE WITH ARCS WITH CENTER POINTS - EXISTING ADJACENT RIGHTS OF WAY
- 6. 3" DASHED LINE WITH ARCS WITH CENTER POINTS - EXISTING ADJACENT EASEMENTS
- 7. 3" DASHED LINE WITH ARCS WITH CENTER POINTS - EXISTING ADJACENT RIGHTS OF WAY
- 8. 3" DASHED LINE WITH ARCS WITH CENTER POINTS - EXISTING ADJACENT EASEMENTS
- 9. 3" DASHED LINE WITH ARCS WITH CENTER POINTS - EXISTING ADJACENT RIGHTS OF WAY
- 10. 3" DASHED LINE WITH ARCS WITH CENTER POINTS - EXISTING ADJACENT EASEMENTS
- 11. 3" DASHED LINE WITH ARCS WITH CENTER POINTS - EXISTING ADJACENT RIGHTS OF WAY
- 12. 3" DASHED LINE WITH ARCS WITH CENTER POINTS - EXISTING ADJACENT EASEMENTS
- 13. 3" DASHED LINE WITH ARCS WITH CENTER POINTS - EXISTING ADJACENT RIGHTS OF WAY
- 14. 3" DASHED LINE WITH ARCS WITH CENTER POINTS - EXISTING ADJACENT EASEMENTS
- 15. 3" DASHED LINE WITH ARCS WITH CENTER POINTS - EXISTING ADJACENT RIGHTS OF WAY
- 16. 3" DASHED LINE WITH ARCS WITH CENTER POINTS - EXISTING ADJACENT EASEMENTS
- 17. 3" DASHED LINE WITH ARCS WITH CENTER POINTS - EXISTING ADJACENT RIGHTS OF WAY
- 18. 3" DASHED LINE WITH ARCS WITH CENTER POINTS - EXISTING ADJACENT EASEMENTS
- 19. 3" DASHED LINE WITH ARCS WITH CENTER POINTS - EXISTING ADJACENT RIGHTS OF WAY
- 20. 3" DASHED LINE WITH ARCS WITH CENTER POINTS - EXISTING ADJACENT EASEMENTS
- 21. 3" DASHED LINE WITH ARCS WITH CENTER POINTS - EXISTING ADJACENT RIGHTS OF WAY
- 22. 3" DASHED LINE WITH ARCS WITH CENTER POINTS - EXISTING ADJACENT EASEMENTS
- 23. 3" DASHED LINE WITH ARCS WITH CENTER POINTS - EXISTING ADJACENT RIGHTS OF WAY
- 24. 3" DASHED LINE WITH ARCS WITH CENTER POINTS - EXISTING ADJACENT EASEMENTS
- 25. 3" DASHED LINE WITH ARCS WITH CENTER POINTS - EXISTING ADJACENT RIGHTS OF WAY
- 26. 3" DASHED LINE WITH ARCS WITH CENTER POINTS - EXISTING ADJACENT EASEMENTS
- 27. 3" DASHED LINE WITH ARCS WITH CENTER POINTS - EXISTING ADJACENT RIGHTS OF WAY
- 28. 3" DASHED LINE WITH ARCS WITH CENTER POINTS - EXISTING ADJACENT EASEMENTS
- 29. 3" DASHED LINE WITH ARCS WITH CENTER POINTS - EXISTING ADJACENT RIGHTS OF WAY
- 30. 3" DASHED LINE WITH ARCS WITH CENTER POINTS - EXISTING ADJACENT EASEMENTS
- 31. 3" DASHED LINE WITH ARCS WITH CENTER POINTS - EXISTING ADJACENT RIGHTS OF WAY
- 32. 3" DASHED LINE WITH ARCS WITH CENTER POINTS - EXISTING ADJACENT EASEMENTS
- 33. 3" DASHED LINE WITH ARCS WITH CENTER POINTS - EXISTING ADJACENT RIGHTS OF WAY
- 34. 3" DASHED LINE WITH ARCS WITH CENTER POINTS - EXISTING ADJACENT EASEMENTS
- 35. 3" DASHED LINE WITH ARCS WITH CENTER POINTS - EXISTING ADJACENT RIGHTS OF WAY
- 36. 3" DASHED LINE WITH ARCS WITH CENTER POINTS - EXISTING ADJACENT EASEMENTS
- 37. 3" DASHED LINE WITH ARCS WITH CENTER POINTS - EXISTING ADJACENT RIGHTS OF WAY
- 38. 3" DASHED LINE WITH ARCS WITH CENTER POINTS - EXISTING ADJACENT EASEMENTS
- 39. 3" DASHED LINE WITH ARCS WITH CENTER POINTS - EXISTING ADJACENT RIGHTS OF WAY
- 40. 3" DASHED LINE WITH ARCS WITH CENTER POINTS - EXISTING ADJACENT EASEMENTS
- 41. 3" DASHED LINE WITH ARCS WITH CENTER POINTS - EXISTING ADJACENT RIGHTS OF WAY
- 42. 3" DASHED LINE WITH ARCS WITH CENTER POINTS - EXISTING ADJACENT EASEMENTS
- 43. 3" DASHED LINE WITH ARCS WITH CENTER POINTS - EXISTING ADJACENT RIGHTS OF WAY
- 44. 3" DASHED LINE WITH ARCS WITH CENTER POINTS - EXISTING ADJACENT EASEMENTS
- 45. 3" DASHED LINE WITH ARCS WITH CENTER POINTS - EXISTING ADJACENT RIGHTS OF WAY
- 46. 3" DASHED LINE WITH ARCS WITH CENTER POINTS - EXISTING ADJACENT EASEMENTS
- 47. 3" DASHED LINE WITH ARCS WITH CENTER POINTS - EXISTING ADJACENT RIGHTS OF WAY
- 48. 3" DASHED LINE WITH ARCS WITH CENTER POINTS - EXISTING ADJACENT EASEMENTS
- 49. 3" DASHED LINE WITH ARCS WITH CENTER POINTS - EXISTING ADJACENT RIGHTS OF WAY
- 50. 3" DASHED LINE WITH ARCS WITH CENTER POINTS - EXISTING ADJACENT EASEMENTS
- 51. 3" DASHED LINE WITH ARCS WITH CENTER POINTS - EXISTING ADJACENT RIGHTS OF WAY
- 52. 3" DASHED LINE WITH ARCS WITH CENTER POINTS - EXISTING ADJACENT EASEMENTS
- 53. 3" DASHED LINE WITH ARCS WITH CENTER POINTS - EXISTING ADJACENT RIGHTS OF WAY
- 54. 3" DASHED LINE WITH ARCS WITH CENTER POINTS - EXISTING ADJACENT EASEMENTS
- 55. 3" DASHED LINE WITH ARCS WITH CENTER POINTS - EXISTING ADJACENT RIGHTS OF WAY
- 56. 3" DASHED LINE WITH ARCS WITH CENTER POINTS - EXISTING ADJACENT EASEMENTS
- 57. 3" DASHED LINE WITH ARCS WITH CENTER POINTS - EXISTING ADJACENT RIGHTS OF WAY
- 58. 3" DASHED LINE WITH ARCS WITH CENTER POINTS - EXISTING ADJACENT EASEMENTS
- 59. 3" DASHED LINE WITH ARCS WITH CENTER POINTS - EXISTING ADJACENT RIGHTS OF WAY
- 60. 3" DASHED LINE WITH ARCS WITH CENTER POINTS - EXISTING ADJACENT EASEMENTS
- 61. 3" DASHED LINE WITH ARCS WITH CENTER POINTS - EXISTING ADJACENT RIGHTS OF WAY
- 62. 3" DASHED LINE WITH ARCS WITH CENTER POINTS - EXISTING ADJACENT EASEMENTS
- 63. 3" DASHED LINE WITH ARCS WITH CENTER POINTS - EXISTING ADJACENT RIGHTS OF WAY
- 64. 3" DASHED LINE WITH ARCS WITH CENTER POINTS - EXISTING ADJACENT EASEMENTS
- 65. 3" DASHED LINE WITH ARCS WITH CENTER POINTS - EXISTING ADJACENT RIGHTS OF WAY
- 66. 3" DASHED LINE WITH ARCS WITH CENTER POINTS - EXISTING ADJACENT EASEMENTS
- 67. 3" DASHED LINE WITH ARCS WITH CENTER POINTS - EXISTING ADJACENT RIGHTS OF WAY
- 68. 3" DASHED LINE WITH ARCS WITH CENTER POINTS - EXISTING ADJACENT EASEMENTS
- 69. 3" DASHED LINE WITH ARCS WITH CENTER POINTS - EXISTING ADJACENT RIGHTS OF WAY
- 70. 3" DASHED LINE WITH ARCS WITH CENTER POINTS - EXISTING ADJACENT EASEMENTS
- 71. 3" DASHED LINE WITH ARCS WITH CENTER POINTS - EXISTING ADJACENT RIGHTS OF WAY
- 72. 3" DASHED LINE WITH ARCS WITH CENTER POINTS - EXISTING ADJACENT EASEMENTS
- 73. 3" DASHED LINE WITH ARCS WITH CENTER POINTS - EXISTING ADJACENT RIGHTS OF WAY
- 74. 3" DASHED LINE WITH ARCS WITH CENTER POINTS - EXISTING ADJACENT EASEMENTS
- 75. 3" DASHED LINE WITH ARCS WITH CENTER POINTS - EXISTING ADJACENT RIGHTS OF WAY
- 76. 3" DASHED LINE WITH ARCS WITH CENTER POINTS - EXISTING ADJACENT EASEMENTS
- 77. 3" DASHED LINE WITH ARCS WITH CENTER POINTS - EXISTING ADJACENT RIGHTS OF WAY
- 78. 3" DASHED LINE WITH ARCS WITH CENTER POINTS - EXISTING ADJACENT EASEMENTS
- 79. 3" DASHED LINE WITH ARCS WITH CENTER POINTS - EXISTING ADJACENT RIGHTS OF WAY
- 80. 3" DASHED LINE WITH ARCS WITH CENTER POINTS - EXISTING ADJACENT EASEMENTS
- 81. 3" DASHED LINE WITH ARCS WITH CENTER POINTS - EXISTING ADJACENT RIGHTS OF WAY
- 82. 3" DASHED LINE WITH ARCS WITH CENTER POINTS - EXISTING ADJACENT EASEMENTS
- 83. 3" DASHED LINE WITH ARCS WITH CENTER POINTS - EXISTING ADJACENT RIGHTS OF WAY
- 84. 3" DASHED LINE WITH ARCS WITH CENTER POINTS - EXISTING ADJACENT EASEMENTS
- 85. 3" DASHED LINE WITH ARCS WITH CENTER POINTS - EXISTING ADJACENT RIGHTS OF WAY
- 86. 3" DASHED LINE WITH ARCS WITH CENTER POINTS - EXISTING ADJACENT EASEMENTS
- 87. 3" DASHED LINE WITH ARCS WITH CENTER POINTS - EXISTING ADJACENT RIGHTS OF WAY
- 88. 3" DASHED LINE WITH ARCS WITH CENTER POINTS - EXISTING ADJACENT EASEMENTS
- 89. 3" DASHED LINE WITH ARCS WITH CENTER POINTS - EXISTING ADJACENT RIGHTS OF WAY
- 90. 3" DASHED LINE WITH ARCS WITH CENTER POINTS - EXISTING ADJACENT EASEMENTS
- 91. 3" DASHED LINE WITH ARCS WITH CENTER POINTS - EXISTING ADJACENT RIGHTS OF WAY
- 92. 3" DASHED LINE WITH ARCS WITH CENTER POINTS - EXISTING ADJACENT EASEMENTS
- 93. 3" DASHED LINE WITH ARCS WITH CENTER POINTS - EXISTING ADJACENT RIGHTS OF WAY
- 94. 3" DASHED LINE WITH ARCS WITH CENTER POINTS - EXISTING ADJACENT EASEMENTS
- 95. 3" DASHED LINE WITH ARCS WITH CENTER POINTS - EXISTING ADJACENT RIGHTS OF WAY
- 96. 3" DASHED LINE WITH ARCS WITH CENTER POINTS - EXISTING ADJACENT EASEMENTS
- 97. 3" DASHED LINE WITH ARCS WITH CENTER POINTS - EXISTING ADJACENT RIGHTS OF WAY
- 98. 3" DASHED LINE WITH ARCS WITH CENTER POINTS - EXISTING ADJACENT EASEMENTS
- 99. 3" DASHED LINE WITH ARCS WITH CENTER POINTS - EXISTING ADJACENT RIGHTS OF WAY
- 100. 3" DASHED LINE WITH ARCS WITH CENTER POINTS - EXISTING ADJACENT EASEMENTS

Surveyor's Certification
 I certify that I have surveyed the above described property and that the same has been surveyed in accordance with the laws of the State of Tennessee and that the same is a true and correct copy of the original survey as shown on the original survey map as shown on the original survey map.

Owner Information:
 Name: [Redacted]
 Address: [Redacted]
 City: [Redacted]
 State: [Redacted]
 Zip: [Redacted]

Other Information:
 Date of Survey: [Redacted]
 Surveyor: [Redacted]
 Title: [Redacted]

Adjacent Property:
 Name: [Redacted]
 Address: [Redacted]
 City: [Redacted]
 State: [Redacted]
 Zip: [Redacted]

TAX PARCEL 145E-N-008
 CO. LOT# 145E-N-008
 TAX PARCEL 145E-N-008

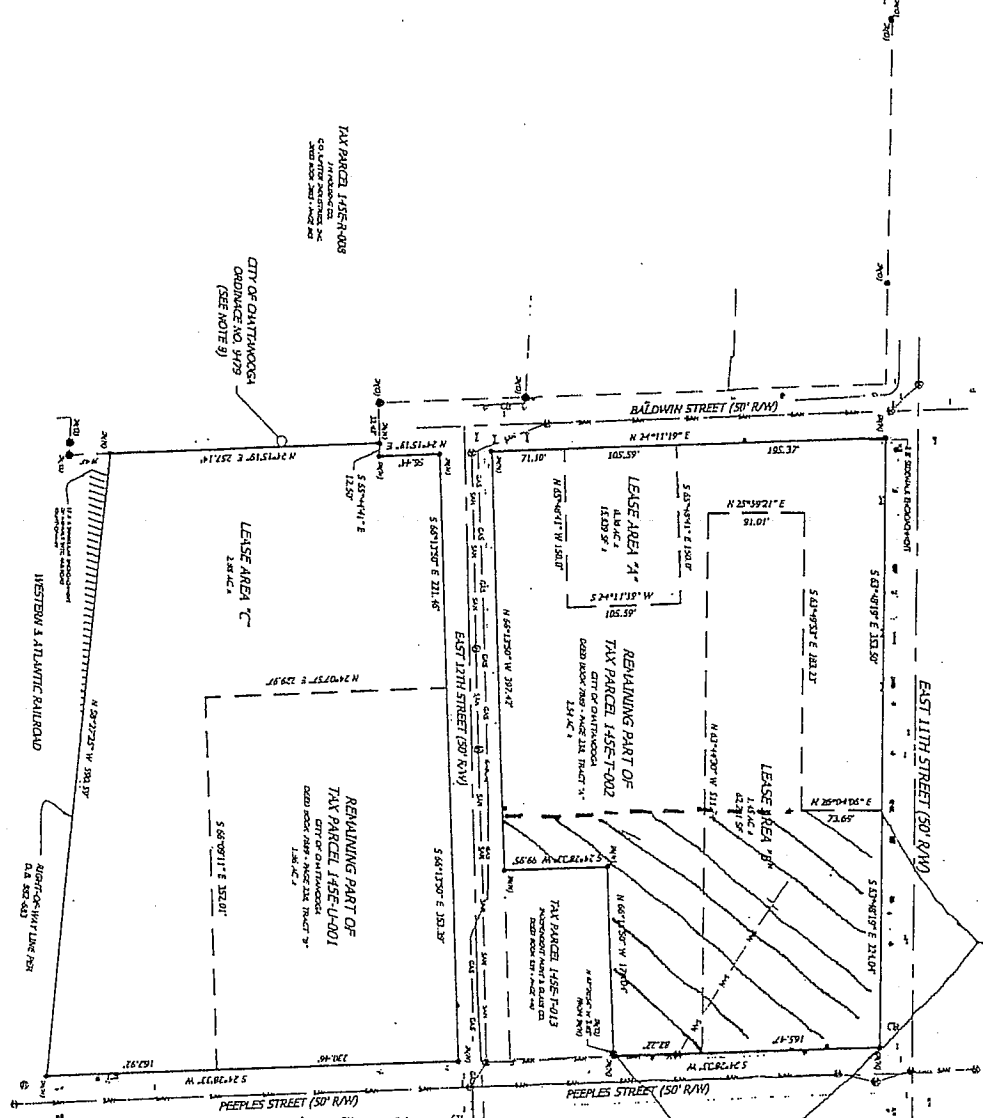
CITY OF CHATTANOOGA
 CHATTANOOGA 3992
 (SEE NOTE 9)

LEASE AREA 'C'
 1.88 AC ±

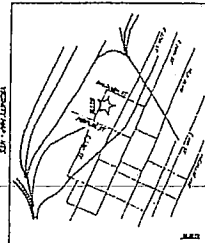
REMAINING PART OF TAX PARCEL 145E-L-001
 CITY OF CHATTANOOGA
 DEED BOOK 989 - PAGE 214 TRACT 'B'

REMAINING PART OF TAX PARCEL 145E-T-002
 CITY OF CHATTANOOGA
 DEED BOOK 989 - PAGE 214 TRACT 'A'

TAX PARCEL 145E-P-013
 CITY OF CHATTANOOGA
 DEED BOOK 989 - PAGE 214 TRACT 'C'



NOTES
 1. ALL DIMENSIONS AND BEARINGS ARE BASED ON THE STATE PLANE COORDINATE SYSTEM FOR TENNESSEE, NAD 83, ZONE 17N. ALL DIMENSIONS AND BEARINGS ARE BASED ON THE STATE PLANE COORDINATE SYSTEM FOR TENNESSEE, NAD 83, ZONE 17N. ALL DIMENSIONS AND BEARINGS ARE BASED ON THE STATE PLANE COORDINATE SYSTEM FOR TENNESSEE, NAD 83, ZONE 17N.



2010-151

ENC NO 2001	DATE 04 13 2010	SCALE 1" = 40'	1.0
BOUNDARY SURVEY			
FORMER FARMER'S MARKET PROPERTY			
CITY OF CHATTANOOGA			
earthwork LLC		6723 Lee Blvd, Chattanooga, Tennessee 37404 (423) 692-4141	

MR-2010-151

E 11th Street

EAST 11TH STREET (50' R/W)

EWALK ENCROACHMENT

S 63°48'19" E 353.50'

S 63°48'19" E 224.04'

S 63°49'53" E 283.23'

N 26°04'06" E 73.69'

LEASE AREA "B"

1.45 AC ±
62,281 SF

N 63°44'30" W 511.28'

N 25°59'21" E 91.01'

S 65°48'41" E 150.0'

LEASE AREA "A"

0.36 AC ±
15,829 SF ±

S 24°11'19" W 105.59'

REMAINING PART OF
TAX PARCEL 145E-T-002
CITY OF CHATTANOOGA
DEED BOOK 7889 - PAGE 238, TRACT "A"
2.54 AC ±

N 66°13'50" W 178.04'

IR(O)
N 67°20'56" W 3.05'
FROM IR(N)

TAX PARCEL 145E-T-013
INDEPENDENT PAINT & GLASS CO.
DEED BOOK 929 - PAGE 440

E 12th Street

N 66°13'50" W 397.42'

EAST 12TH STREET (50' R/W)

S 66°13'50" E 221.46'

S 66°13'50" E 353.29'

REMAINING PART OF
TAX PARCEL 145E-U-001
CITY OF CHATTANOOGA
DEED BOOK 7889 - PAGE 238, TRACT "B"
1.86 AC ±

S 65°44'41" E 12.50'

N 24°07'57" E 229.97'

LEASE AREA "C"

2.88 AC ±

S 66°09'11" E 352.01'

224' ±

Peoples Street

218' ±

NOTES:

1. NORTH ARROW
2. NO IMPROVE
3. (IR(N)) DECK
4. LENGTH, W/
5. THIS PLAT H
6. HAS BEEN R
7. 262.610 ±
8. COMPOSITE
9. THIS PLAT B
10. DECKS RE
11. OTHERWISE
12. MONUMENT
13. FROM THE R
14. UNRECOR
15. SHOWN H
16. AS EVIDEN
17. TERN
18. STANDARD
19. ALL UNDER
20. APPROXIMA
21. SHOWN, AN
22. EVIDENCE
23. (RECORDED
24. PROVIDED
25. BURIED UN
26. THIS PROP
27. UTILITY
28. SAID INFO
29. LOCAL UTIL
30. BE MARKED
31. THIS PROP
32. HAZARD OF
33. 11-07-2002
34. PER CITY C
35. PORTION C
36. RIGHT-OF-
37. EASEMENT:
38. CHATTANO